

## Bridge Rectifiers

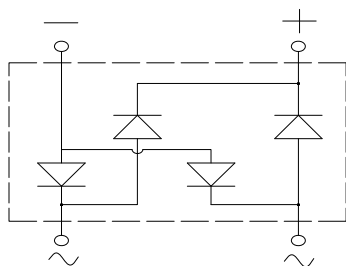


### Features

- UL recognition, file #E313149
- Glass passivated chip junction
- Ideal for automated placement
- High surge current capability
- Meets MSL level 1, per J-STD-020, LF maximum peak of 260 °C

### Typical Applications

General purpose use in AC/DC bridge full wave rectification for SMPS, lighting ballaster, adapter, battery charger, home appliances, office equipment, and telecommunication applications.



### Mechanical Data

- **Package:** YBS  
Molding compound meets UL 94 V-0 flammability rating, -compliant, Halogen-free
- **Terminals:** Tin plated leads, solderable per J-STD-002 and JESD22-B102
- **Polarity:** As marked on body

### ■Maximum Ratings (T<sub>a</sub>=25°C Unless otherwise specified)

PARAMETER	SYMBOL	UNIT	YBS20005	YBS2001	YBS2002	YBS2004	YBS2006	YBS2008	YBS2010
Device marking code			YBS20005	YBS2001	YBS2002	YBS2004	YBS2006	YBS2008	YBS2010
Maximum Repetitive Peak Reverse Voltage	V <sub>RRM</sub>	V	50	100	200	400	600	800	1000
Maximum RMS Voltage	V <sub>RMS</sub>	V	35	70	140	280	420	560	700
Maximum DC blocking Voltage	V <sub>DC</sub>	V	50	100	200	400	600	800	1000
Average rectified output current @60Hz sine wave, R-load, T <sub>c</sub> =110°C	I <sub>O</sub>	A	2.0						
Forward Surge Current (Non-repetitive) @60Hz Half-sine wave, 1 cycle, T <sub>j</sub> =25°C	I <sub>FSM</sub>	A	75						
Forward Surge Current (Non-repetitive) @1ms, square wave, 1 cycle, T <sub>j</sub> =25°C			150						
Current squared time @1ms≤t<8.3ms T <sub>j</sub> =25°C, Rating of per diode	I <sup>2</sup> t	A <sup>2</sup> s	23.3						
Storage temperature	T <sub>stg</sub>	°C	-55 ~ +150						
Junction temperature	T <sub>j</sub>	°C	-55 ~ +150						

# YBS20005 THRU YBS2010

## ■Electrical Characteristics (T<sub>a</sub>=25°C Unless otherwise specified)

PARAMETER	SYMBOL	UNIT	TEST CONDITIONS	YBS20005	YBS2001	YBS2002	YBS2004	YBS2006	YBS2008	YBS2010
Maximum instantaneous forward voltage drop per diode	V <sub>F</sub>	V	I <sub>FM</sub> =1.0A	1.0						
Maximum DC reverse current at rated DC blocking voltage per diode	I <sub>R</sub>	μA	T <sub>j</sub> =25°C	5						
			T <sub>j</sub> =125°C	100						
Typical junction capacitance	C <sub>j</sub>	pF	Measured at 1MHz and Applied Reverse Voltage of 4.0 V.D.C	26						

## ■Thermal Characteristics (T<sub>a</sub>=25°C Unless otherwise specified)

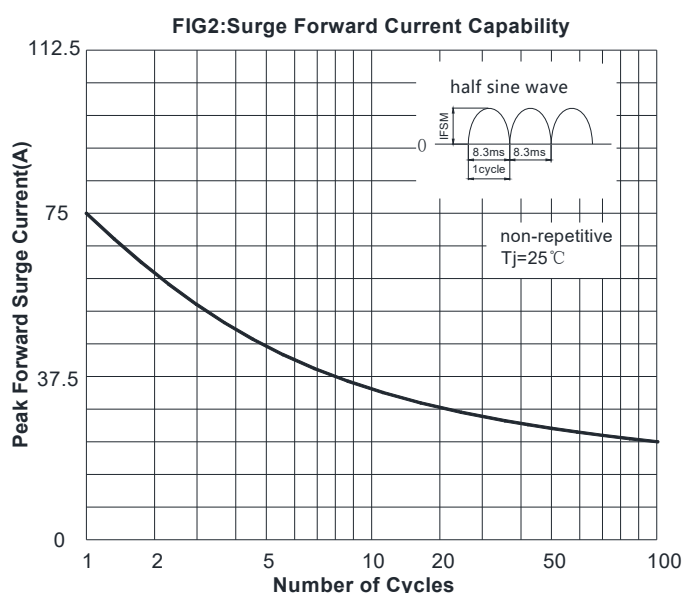
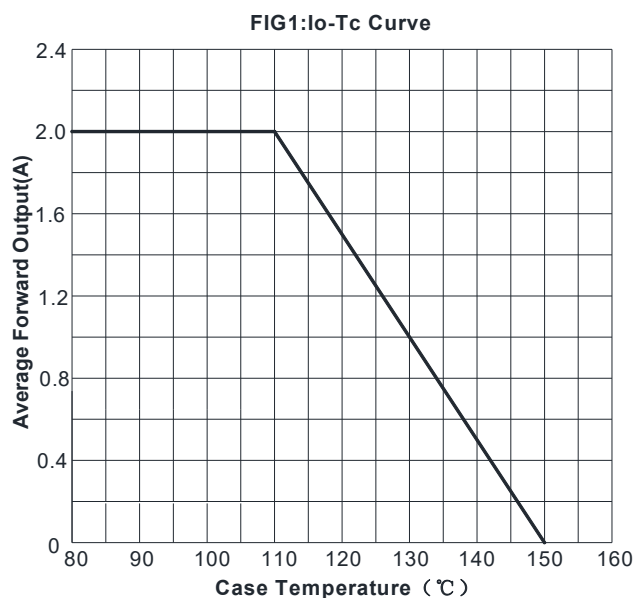
PARAMETER		SYMBOL	UNIT	YBS20005	YBS2001	YBS2002	YBS2004	YBS2006	YBS2008	YBS2010
Typical Thermal Resistance	Between Junction and Ambient	R <sub>θJ-A</sub>	°C/W	55.0						
	Between Junction and Lead	R <sub>θJ-L</sub>		15.0						
	Between Junction and Case	R <sub>θJ-C</sub>		10.0						

Note: Device mounted on P.C.B with 35mm\*25mm\*1.7mm.

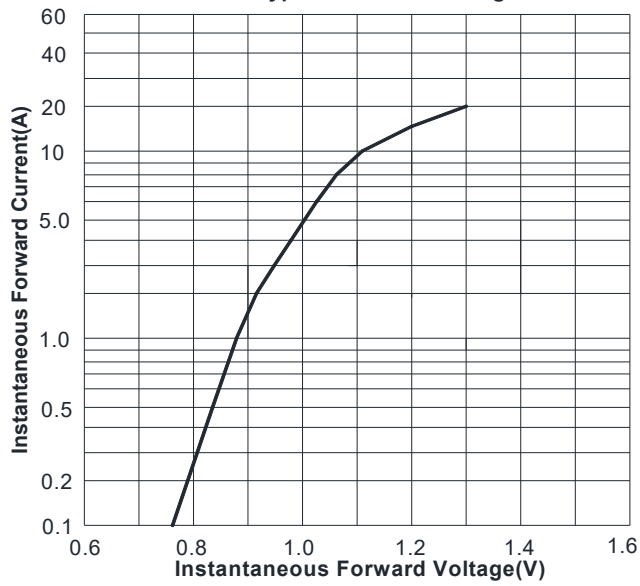
## ■Ordering Information (Example)

PREFERRED P/N	PACKING CODE	UNIT WEIGHT(g)	MINIMUM PACKAGE(pcs)	INNER BOX QUANTITY(pcs)	OUTER CARTON QUANTITY(pcs)	DELIVERY MODE
YBS20005-YBS2010	F1	Approximate 0.218	3000	/	42000	13" reel

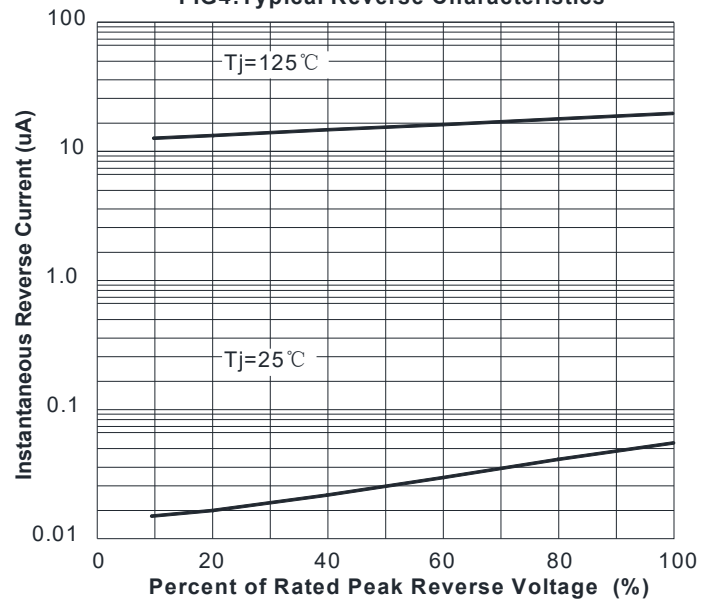
## ■ Characteristics(Typical)



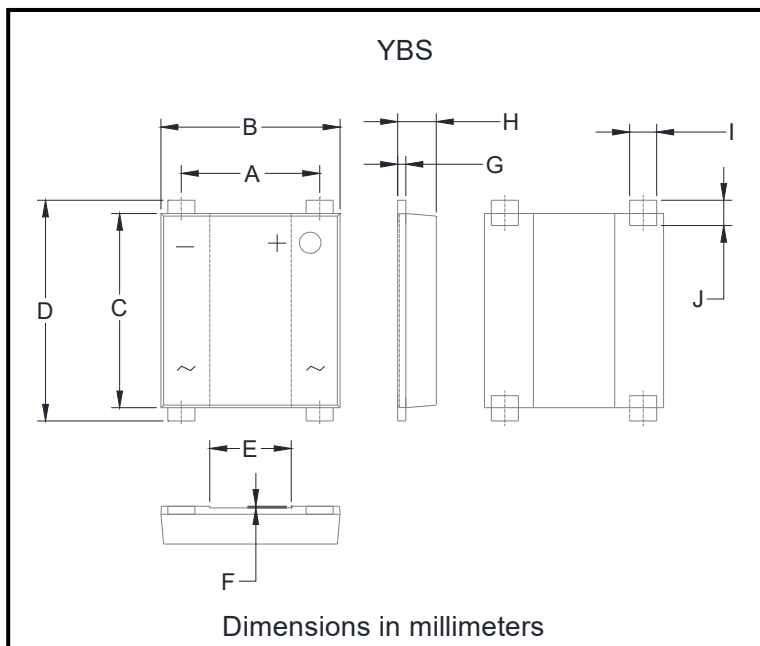
**FIG3: Typical Forward Voltage**



**FIG4: Typical Reverse Characteristics**

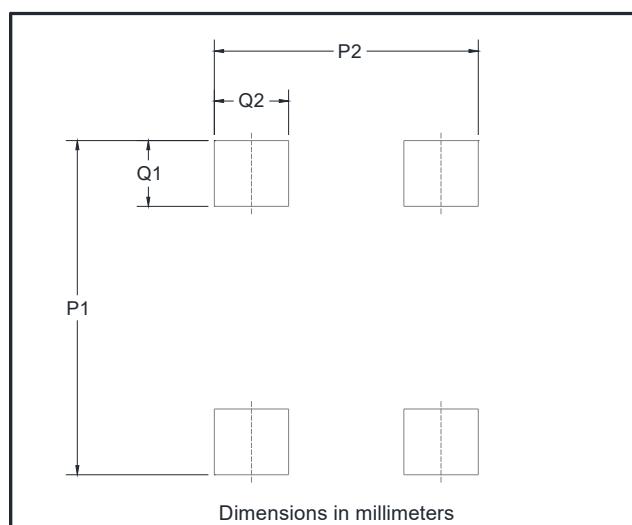


## ■ Outline Dimensions



YBS		
Dim	Min	Max
A	5.00	5.20
B	6.50	6.70
C	7.20	7.40
D	7.90	8.60
E	2.90	3.10
F	0.04	0.08
G	0.27	0.40
H	1.30	1.50
I	0.95	1.15
J	0.70	1.05

■ Suggested pad layout



Dim	Min
P1	9.15
P2	7.10
Q1	1.80
Q2	2.00

## Disclaimer

The information presented in this document is for reference only. Shanghai Sunco Electronics Co., Ltd reserves the right to make changes without notice for the specification of the products displayed herein to improve reliability, function or design or otherwise.

The product listed herein is designed to be used with ordinary electronic equipment or devices, and not designed to be used with equipment or devices which require high level of reliability and the malfunction of which would directly endanger human life (such as medical instruments, transportation equipment, aerospace machinery, nuclear-reactor controllers, fuel controllers and other safety devices), Russiansunco or anyone on its behalf, assumes no responsibility or liability for any damages resulting from such improper use of sale.

This publication supersedes & replaces all information previously supplied. For additional information, please visit our website [http:// www.russiansunco.com](http://www.russiansunco.com) , or consult your nearest Russiansunco's sales office for further assistance.